



North St. Louis County

Habitat
for Humanity®

Habitat HIGHLIGHTS

Summer 2012

Volume XVIII, Edition III

MISSION VISION

A world where everyone has a decent place to live.

MISSION STATEMENT

Seeking to put God's love into action, Habitat for Humanity brings people together to build homes, communities and hope.

Inside this issue:

Summer VISTA Meet Alina Stevenson	2
Third Annual Tool Drive High School Builds	3
Thrivent Builds College Partnerships	4
Habitat 500 50th Home Update	5
Contributors	6
Contributors Special Thanks	7

BUILDING HOMES, BUILDING HOPE ~ 2012 BUILDING SEASON

When the hammers and saws start singing their songs as the building season kicks off each year it is easy to see that Habitat for Humanity brings people in partnership to build homes. This year is no exception. The 2012 building season actually got started in January with a rehab project with the Myers family. The 50th Habitat home in North St. Louis County began in June with the Hart family. In late July the Richards home in Virginia started up as volunteers laid the foundation for the home and started framing in August.

September will be a noisy month too. Three school projects start up simultaneously! The Hibbing and Chisholm High Schools will begin the Harder's home in Hibbing. Virginia's Building Construction Class will begin a rehab project with the Peterson family. The Mesabi Community and Technical College will also start construction in Eveleth on the Manley home. All three of these school builds will receive donated electrical labor from the Hibbing Community College's electrical program. This will be the first year that Habitat has started six homes in one building season!

When we think of Habitat for Humanity building affordable homes in our community it is good to pause and identify just who Habitat is.

North St. Louis County Habitat for Humanity is:

- A dedicated volunteer board of directors who works to provide oversight, leadership and direction

- A skilled staff of four who coordinate and leverage volunteers to serve families

- A growing group of committee members who keep the behind the scenes activities moving forward. These activities include fundraising, event planning, public relations, church relations, construction management, family selection and family support

- An energetic community of construction volunteers both skilled and unskilled who come out to work on build sites for a day, week or even throughout the length of the project

- A creative group of individuals and restaurants who provide meals to keep construction volunteers on site by feeding them lunch

- A cheerful donor who writes a check to support Habitat's life changing work or donates an entire home to be rehabbed

- A generous grantor such as the Wells Fargo Foundation, US Bank Corporation, Cleveland Cliffs Foundation, Thrivent Financial for Lutherans, Catholic Daughters of the Americas, North East United Way of Minnesota, to name a few, who provide funding for building materials

- Our city, county and state governments who provide land and funding for home construction and infrastructure. This year we are building on a lot donated by Eveleth, land that the City of Hibbing and the IRRRB helped us clean up. We are also rehabbing homes with funding from St. Louis County's CDBG program.

- A caring contractor who donates their services to help a family own an affordable home. Lightening Electric, the Local 633 Masons Union, Mesabi Masonry, Miller Testing, and Pohaki Lumber to name a few. Check out the "Partnership" page on our website to see more!

The danger in trying to identify so many faces is that it is nearly impossible to do so. Every day I am amazed at the blessings Habitat for Humanity enjoys by the hands, hearts and generosity of so many people. These individuals, organizations, businesses and churches strongly believe in helping our neighbors with the basic need of a home.

The one last group that I will mention, though, is the 50 partner families who have worked with all of us to build their homes. Working together we are not only nailing boards and siding, we are building hope for each of these families and their children. As each one of these homeowners faithfully pays their affordable mortgage, their payments are placed back into Habitat's building program. These funds will continue to build the next 50 homes and bring the light of hope to many who struggle in poverty housing.

Thanks to all of you for building homes and building hope with us in North St. Louis County.

In partnership to build hope,

Nathan Thompson
Executive Director

SUMMER VISTA PROGRAM HELPS VOLUNTEERS BUILD IN RECORD TIME



This Habitat for Humanity was blessed with two great AmeriCorps VISTA volunteers. Tim Madzey (left) and Brian Erickson (right) joined the staff team as intern's with the VISTA program for the months of June and July. They worked to ensure volunteers had an excellent experience on the build site. Most of their time was spent working with volunteers on Habitat's 50th home that is being built in Hibbing. With their help and that of Herald Wentland, volunteer building supervisor, the project was able to advance from the foundation to past the sheetrock stage in just two short months. NSLCHFH and its volunteers are very grateful for your service this summer.

~Thank You!~



AmeriCorps VISTA—PASSING THE “CAPACITY BUILDING” TORCH



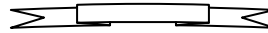
Amanda Mangan (fourth from the left) at her last NSLCHFH board meeting.

Our organization has been blessed with VISTA volunteers over the last nine years who have built our capacity to serve our neighbors in need. When our first VISTA started in 2004 we were building three homes. This year as Alina Stevenson begins her VISTA year we are starting six!

During her year of AmeriCorps VISTA service from August 2011 to August 2012, Amanda Mangan worked to build a new database and website for the affiliate. She also helped streamline the organizations volunteer management systems to ensure that Habitat is able to offer an excellent volunteer experience at the build site. Amanda has taken a VISTA position at Habitat Minnesota to support VISTA volunteers across the state. Thanks Amanda for a great year of service!

NSLCHFH was fortunate to receive another VISTA placement for the 2012-

2013 year. Alina Stevenson joined the NSLCHFH as our Family Services VISTA in early August.



Hello! My name is Alina Stevenson. I recently graduated from Gustavus Adolphus College with a degree in history. For a majority of my childhood I lived in Coos Bay, Oregon spending my afternoons and evening training to be a gymnast, which paid off as I became a member of Gustavus Adolphus College's gymnastics team. I fell in love with Habitat for Humanity my senior year of college while on a spring break work trip to Tennessee. Helping for the first time on a Habitat build was an amazing feeling. I knew I wanted to be a part of Habitat for Humanity where ever life took me. I am grateful for this opportunity to work with NSLCHFH and its partner families. The past three weeks here have been some of the best of my life, and I have Nathan, Tom, and the whole Habitat community to thank for that!

This year I have the privilege of working with Habitat to build up the family support program. Thankfully the foundation for my work has been laid by Amanda and the Family Support Committee volunteers before my arrival. Thanks! I am currently delving into my year of service by spending time researching and learning new ways to make Habitat's support systems as beneficial to our partner families as possible.

In the past, partner families received one person as a mentor that helped them through the entire homeownership process. As the organization grew to serve six families a change in this support process was needed to keep up with the partner families needs! Last February NSLCHFH switched to a monthly meeting format for both the partner families and mentors to come together to answer questions, network and build relationships. I will be working to support these meetings which will also contain an educational component that focuses on aspects of homeownership. I am greatly looking forward to helping grow this program and excited to continue learning and growing this year while strengthening NSLCHFH's support for our most important partner, our families.

~ Alina Stevenson



THIRD ANNUAL TOOL DRIVE... WHAT'S IN YOUR ~~WALLET~~ ...GARAGE?

As leaves are being raked this fall and equipment being stored in sheds and garages, take a look to see if there are any tools that you might want Habitat for Humanity to put to good use! These are some items that would be of great help—new or gently used preferably:

Small items:

Tape measures & Tool Belts
Pry bars
Retractable utility knives
Wood chisels
Chalk lines and string lines
Drill bits, Spade bits
Hole saws & Sawzall blades
Bits for driving screws

Socket set—Wrenches
Hand Saw
Tin snips
Channellocks & Vise-grips

Power tools:

Sawzall
Cordless drills (18 volt and up)
Tile wet saw
Finish nail guns (16 ga. and 18 ga.)
Small air compressor
Shopvac

Miscellaneous:

6' & 8' step ladders
Little Giant type ladders
2', 4' and 6' levels
Scaffolding

Shovels
Rakes—Push Brooms



Help fill the trailer with tools!

HIGH SCHOOLS SET TO START TWO HABITAT HOMES THIS FALL



Hibbing and Chisholm High School Students receive NSLCHF's "Champions of Affordable Housing" award at the Putkonen's Home dedication in May 2012.

Little did we know as we gathered in a classroom in Hibbing in 2008 with school administrators and carpentry class teachers that this would be such a successful program. Minnesota's Applied Learning Institute was just getting off the ground and schools were looking at new ways to engage their students with hands on learning. It wasn't long into the meeting that we realized that partnering together to offer an excellent student learning experience while addressing our neighbors need for affordable housing would be a great match.

In the five years since that initial meeting this program has resulted in 9 affordable homes built in our community! This fall high school and college students will be partnering with North St. Louis County Habitat for Humanity to provide the labor to build three more homes.

The Hibbing and Chisholm High Schools will be building a home in Hibbing in partnership with Habitat and the Harder family. The ground breaking for this home is scheduled for Monday, September 10th at 10:00 am. Come join us at 1211 16th Ave East in Hibbing.

Virginia High School's Building Construction Class with students from Virginia, Eveleth and Mt. Iron High Schools will be rehabbing a home in the City of Virginia. The students in the program have completed three home remodels' since 2009. The home they will be rehabbing this year was generously donated by the Peterson and Meadows families. They wanted their family home to continue providing the same warmth and safety they had enjoyed to a family in need of an affordable home.

This home will be built in partnership with Renee Peterson and her family (below). Renee heard about the Habitat program through her work at Blue Cross which allows their employees to take 20 hours of paid time off each year to volunteer with Habitat and other non profit organizations.

Hear more about this project at the ground breaking ceremony to be held on September 11, at 9:00 am at 105 8 1/2 Street South in Virginia.



THRIVENT BUILDS HOME IN VIRGINIA WITH THE RICHARDS FAMILY



**Thrivent®
Builds**
with Habitat for Humanity®

Thrivent Financial for Lutherans is the largest sponsor of Habitat for Humanity homes across the country. As a fraternal organization Thrivent is committed to giving back to the community in a way that also engages its investors to make a difference in people's lives.

This year NSLCHFH has received a Thrivent Builds grant to build with Katie Richards and daughter Kaylynn (pictured above at their ground breaking with Habitat Executive Director Nathan Thompson).

The Richard's home began with a ground breaking on July 29th.

The Thrivent sponsorship covers 55% of the homes cost. Local Lutheran congregations have committed to raise an additional 10% and 35% is being funded through a grant from the Wells Fargo Foundation and our individual donors.

The foundation was poured by Mesabi Masonry volunteers. Framing began on August 6th with two weeks of support from Habitat RV Care-a-vanners (above center and right) who travel from Habitat build site to build site volunteering to build homes. Along with the Care-a-vanners, volunteers from our local community and many Lutheran churches worked side by side to complete the exterior of the home in just two short week.

At this stage of construction we often get comments about the home being completed so fast. We are quick to

remind folks that the exterior is done but there are another couple of months of interior work and details to be completed before the home is dedicated at the end of October!

There is plenty of room for community volunteers, church, organization and business groups to help finish the home.

A big thank you is owed to all the wonderful volunteers who prepared meals for big work crews during the exterior portion of this project. The Care-a-vanners said that they measured how good of a project this was by how much weight they gained in their two week stay! If you would like to volunteer to make a lunch for good hearted construction volunteers on the build site please call the office at 218-749-8910 or toll free at 866-749-8910.

MESABI TECHNICAL AND HIBBING COMMUNITY COLLEGES BUILD HOMES



Instructor Gary Kangas (left) and Mesabi second year carpentry students

The Mesabi College's Second Year Carpentry Class pauses for a quick picture as they build a project staging shelter near the Manley's foundation in West Eveleth. This partnership, now in its second year is enabling Habitat to start a sixth home this year.

This home is being built with Megan Manley who has struggled for many years to find rental properties to meet the needs of her disabled daughter. In their current situation, without a bathroom on the main level, Megan lifts her daughter up the stairs each day; a task that is getting harder every year as her daughter continues to grow. Megan is excited to work along side of these students as she

fulfills her sweat equity requirements while learning valuable homeownership skills.

This home is being built on a lot that has been generously donated by the City of Eveleth in its efforts to build more affordable homes in the community.

The Hibbing Community College will be partnering with Habitat to provide the electrical labor for this project and the two high school homes that are being built this year, a partnership that has continued since 2008.

Join us at the ground breaking for the Manley's home on Monday, September 17th at 10:00 am. The home is located at 1113 West 2nd St. in "West" Eveleth.

HABITAT 500 - A RECORD BREAKING YEAR!

THANK YOU, donors, riders and volunteers that made the 2012 Habitat 500 a record breaking success!

This year riders celebrated the building of the 2,001st Habitat home being built in Minnesota.

A total of 135 riders or teams rode the 500 miles setting a new record. NSLCHFH had 18 riders in the event!

The Habitat 500 raised a total of \$365,000 to build homes for needy families across Minnesota and just over \$28,000 has been raised to build homes with our neighbors right here in North St. Louis County. If you forgot to send your donation in, there is still time, just mark "Habitat 500" on your check or the

envelope.

This year we had a team of five new riders share the event by taking one or two days each. The team added \$5000 to our fundraising! If you have wanted to ride but could not take the whole week to do it, perhaps riding as part of a team is right for you. We are always looking for new riders. Next year's ride will be July 14-20. Please, let us know if you have any interest in riding all 500 miles or participating on a team.

One other thing you should know about the Habitat 500 this year: six board members rode along with two staff members. That shows commitment on behalf of the board and staff who give



of their time, money and endure the ride to support our neighbors in need of a home.

Thank You everyone that made this a record breaking year!

~Tom Long

50TH HOME ON THE RANGE—THANK YOU FOR YOUR SUPPORT!

The 50th Habitat home in North St. Louis County is being built in Hibbing in partnership with the Hart family. After a well attended ground breaking ceremony on June 3rd, volunteers led by volunteer building supervisor, Harold Wentland, and Summer VISTA interns Tim Madzey and Brian Erickson began work on the foundation.

The Local 633 Mason's Union sent volunteers (below left) to pour and finish the slab. The Local 633 has partnered with Habitat to provide professional labor on the majority of our 50 homes!

Work continued steadily during the months of June and July with the additional leadership provided by the VISTA interns. During this time the home has moved through the foundation, framing, roofing, siding, insulation and sheetrock stages due to

wonderful community support. Thank you!

Many individuals have come to work on the home this summer. The project has also received volunteer support from many organizations, churches and groups including: Range Association of Realtors, Outward Bound, Sentenced to Serve, Delta Airlines, Fairview, Kiwanis, Rotary, Hibbing Chamber Women (below center), Lowes, Barr Engineering (below right), Wells Fargo, Our Saviors Lutheran Church, First Assembly of God and Emanuel Baptist Church.

Lori Hart, our Habitat partner on this home, and her family and friends have also been putting in "sweat equity" to complete the home. Homeowners work a minimum of 200 hours per adult family member as part of their down payment. Sweat equity gives

homeowners valuable experience and home maintenance skills as they work on their home from foundation to finish. It also gives them a chance to build relationships with our volunteers. These relationships can be life changing to both the homeowner and volunteer. A sense of pride and ownership is also built as homeowners experience the building of their homes first hand.

The 50th home is sponsored by the Wells Fargo Foundation with both funding and volunteer support from its local branch banks.

We are very grateful for the wonderful support that this and all our homes have received. If you haven't gotten your chance to volunteer on this home there is still time. Give us a call to find out about volunteer opportunities!



Board of Directors:

Mark Weir

President

Bob Pugleasa

Vice President

Caroline Owens

Treasurer

Rod McPeak

Secretary

Rosalyn Barker

Sara Brown

Tom Clayton

Pastor Jim Deters

Doug Gettle

Harry Grinage

Hugh Hultman

Rev. Roger Johnson

Tom Krause

Kathy Laine

Cassandra Spector

Julie Spiering

Deb Warner

Rick Wolff

Staff:

Nathan Thompson

Executive Director

Dave Alaspa

Construction Manager

Tom Long

Resource Dev. Manager

Alina Stevenson

Family Services

/AmeriCorps*VISTA



CONTRIBUTORS

Thank you for your generous support! Habitat for Humanity extends a word of thanks to those who have contributed money, materials, and professional services.

Donors listed from 3-21-12 thru 8-21-12.

If we have missed your name, please inform us so that we can recognize you in the next newsletter.

Joseph Ahlin	Christianson	Alden & Arlene	Dan & Debbie
Pearl Alaspa	Kathleen Cina	Hendrickson	Madrinich
Robert & Aletha Allen	Tracy Coldagelli	Walter & Pamela	William Makela
Alfred Almquist	Joanna Dallmann	Heubner	Nancy Maki
Edward & Anita Alto	Melody Dane	Thomas Hewett	Peggy Makkyla
Julie Altuvilla	Dean Dewberry	Janet Hill	Julianne Marconett
Karl & Margaret Anderson	Gayle Dibley	Kristine Holmes	Paul & Florence
Patricia Anderson	Ron Dicklich	Barbara Horvat	Marturano
Pauline Anderson	Judy Dinger	Mark & Nancy Hukka	Ann M. Mastell
Phyllis Antognozzi	Joan Domanoski	Pat Ives	Gloria Mattila
Carl & Ann Antus	Craig Doughty	Mark & Carolyn Jacobs	Clarence & Mary Ann
Carol Archambeau	George & Susan Drake	Gerald & Susanne	Mattson
John & Mable Arola	Robert & Lois Dunne	Jacobson	Jane Mattson
Mable Arola	Roger Eads	Anne Jagunich	Dick Matyska
Shirley Aronen	David & Mary Jean	Bob Jalonen	J. G. McClelland
Gary & Helen Aubol	Eilertson	Eugene & Marilyn	Anita McNulty
Joseph & Jaqueline Ault	Greg Eisenhower	Jenkins	Marjorie McPeak
Kim Baczewski	Madeleine Emery	Elizabeth Johnson	Rod & Marjorie McPeak
Jennifer Baker	Lynn Englehorn	Margaret Kajala	Mae Meglen
Larry & Jan Baldwin	Carol Erickson	Pam Karich	Neeraj Mehta
Thomas & Mayme Barber	Charles & Doreen	Edward & Gretchen	Charlene Meinzer
Rosalyn Barker	Erickson	Karkoska	Joseph Mertel
Ronald & Judith Bardeck	Frank & Barbara Ann	Peter & Kathleen	Douglas & Linda Mihm
Robert & Jean Bartling	Falkowski	Kearney	Faye Mobilia
Kenneth Bazyn	Bertolas Family	Peter & Shelly Kemp	June Moe
Galen & Doreen	Deborah Filander	Peg Kepler	Alice Moren
Bergman	Katherine Finc	Byron & Mary Kesanen	Ivan & Darlene Mouw
Glenn Bertelson	John & Betsy Flaten	Doug & Nancy Killian	Cynthia Mueller
Becca Birk	Janice Florey	Bruce & Ethelyn	JoAnn Muller
Todd & Kim Bjork	William Fossum	Kniivila	George & Holly Myers
Carol Blomberg	Kristen Foster	Paul & Carol Knuti	Karen Myers
Kathy Bogren	Larry Furlong	Susan Kolstad	Margaret Nelson
Mary J. Bratt	Dale & Luella Gannarelli	Ruth Koski	P. Jean Nelson
Donald & Diane Brooks	Janet Gaspersich	Millie Kostich	Ted Nelson
Dorothy Bruno	Patricia Gill	David Krafft	Virginia Nelson
Allen Bubash	Sandra Giltz	Joseph Kraker	Crystal Nickerson
Lisa Buchanan	Gary & Karyl Giombetti	Carol Krantz	Richard Niss
Ramon & Joanne	Elana Glumac	Arvin Krause	Betty Nygard
Bugliosi	Gerry & Mary Lynn	Eric Krause	Ann Ogg
Timothy & Kellie	Golobich	Lisa Krause	Cathy Okland
Bungarden	Floyd & Barb Gorman	Tom & Wendy Krause	Kathy Oliver
Carol Burgess	John & Holly Grothe	Cindy Krenz	Ruth Ollila
Priscilla Bussey	Justin & Katie Gustafson	Jeremy Krog	Doreen Olson
Mark Butorac	Lorri Gustafson	Jon & Arrlette Krog	James & Marcia Olson
Maxine Buvarp	Virginia Gutowski	Kimberly Kugel	Lori Olson
Jay Carlsgaard	Jeffrey & Janet Hakala	Don & Lois Lackner	Phyllis Olson
Bob & Mary Lou	Bob & Mary Hall	Evelyn Lahti	Randy & Kathy Oppelt
Carlson	Bill & Marjorie Hallin	Cheryl Lamppa	Susan Ostman
Roger & Lois Carlson	Michael & Kathy Hannay	Anne Larson	Jennifer Osufsen
Joel & Sheila Cassingham	Carol Hansen	Dan Lastovich	Anne Pasalich
Rose Ann Chinn	Paul & Beatrice Harnad	Evelyn Lennon	James & Virginia
Jean Choe	Lee & Dolly Hawley	Carl & Joanne Lindgren	Patregnani
L.R. & Georgia	Orlen & Doris	Barbara Litchfield	Shelby Paulson
Christianson	Helgerson	Tom & Lois Long	Kevin Pelkey
Wayne & Bernadine	Arne Helland	Deborah Mackie	Sylvia Perell

Dena Petite
Renold & Helen
Pettinelli
Claude Piguet
Dezirae Putkonen
William Radosevich
Sue Ragan
Paulette Rancourt
Marilyne Rathbone
Ruth Reabe
Karen Reznay
James & Joan Rhude
Mary Richards
Nancy Richards
Tracy Richards
Joanne Robich
Kim Robinson
Kathy Romer
Catherine Rouleau
Andrine Rozinka
Rose Rushton
Thomas & Mary
Russ
Darwin Salo
Theresa Sanders
Deidre Schackman
Karen Schmidt
Oscar & Susan Schock
Beth Schupp
Paula Sedey
Nancy Shusterich
Kenneth Siebert
Jackie Simola
Donald & Veda Sirek
Frank & Kathleen
Siskar
Craig Sistad
Violet Smilanich
Cynthia Smith
Donald & Norma
Smith
Ginny & Tom Smith
Holly Snow
Frank & Jeanne Sopp
Suzanne Sorenson
Annette Spolarich
Alta Sprink
Carla Squires
Judie Stadlander
James Stanhope
Ken & Sig Stolhammer
Krehl Stringer
Paula L. Swanson
Darrel & Joie Swenson
Dennis & Bonnie
Tabbert
Anna Van Tassel
Tim & Barb Thomas
Frieda Thompson
Nathan & Sara
Thompson
Karen Tini
Patricia Tomassoni
Heather Tracey

Kurth Family Liv Trust
Art & Lisa Tweten
John & Sharon Valley
Richard & Shelia
Vandervort
Jill Varichak
Dan Vickmark
John Vukmanich
Bill & Kay Waite
Sandra Wallin
Mary Jean Waters
Kathleen Weaver
Kathryn Weaver
Mark & Lynda Weir
Abbey Weiss
Priscilla White
Leonard Willey
Vivian Williams
Rick & Sally Wolff
John Zager
Joanne Zahn
David Zarich
Shelley Zeidler

CHURCHES
Blessed Sacrament
Parish - Hibbing
Ely Gospel Tabernacle
Church
Evangelical Covenant
Church of Cook
Evangelical Free Church
of Embarrass
First Assembly of God -
Hibbing
Ledgerock Community
Church - Ely
Sand Lake Chapel
St James Presbyterian
- Tower
Woodland Presbyterian
- Babbitt

BUSINESSES
Arcelor Mittal
Rasmusson Excavating
Cleveland Cliffs
Foundation
Continental Mills
Electric Power Door
H & R Block
John Krog Insurance
L.W. Anderson
Properties
Lake Country Power
Lakeshor Motor Inn
McGregor House
Movers
Minnesota Community
Foundation
Peterson Agency Inc
Potlatch Corporation
Range Association of
Realtors

Semenick Construction
Super One South
The Bike Shop - Ely
Ulland Brothers
Virginia Coop Credit
Union

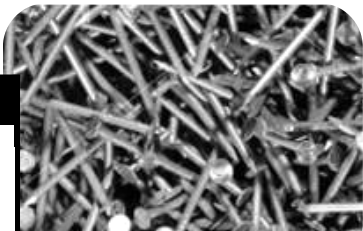
ORGANIZATIONS
AEOA
Fraternal Order of
Eagles Aerie 4456
Habitat Minnesota
Midcontinent
Foundation
United Way of
Northeast MN
Wells Fargo Foundation

MEMORIALS
◆ Bette Holmes in
Memory of Jim &
Edith Gordon
◆ James & Virginia
Patregnani in
memory of
Delores Barrett
◆ Tom & Wendy
Krause in memory
of Marian Krause
◆ Virginia Gutowski
in memory of
Shirley Evans

GIFTS IN HONOR
◆ Gloria Mattila in
honor of Doug
Gettle

SPECIAL THANKS!
Arcelor Mittal
Akadia Custom
Millwork
Access Broadband
Ahrens-Thompson
Realty
Barr Engineering
Bill Gruska
Construction
City of Eveleth
City of Hibbing
City of Virginia
City of Babbitt
Culbert Realty
Culligan of Virginia
Dave's Pizza
Delta Airlines
Do-Bid.com
Dominoes Pizza
EKS Electric—Butch
Shaffer
Erickson's Lumber Co.
First National Bank of
Gilbert
Gethsemane Lutheran

Church
HickoryTech
High Schools
Chisholm
Hibbing
Virginia
Hibbing Community
College
Hibbing Daily Tribune
HomeTown Focus
Iron Range Plumbing
IRRRB
John Tini
John Miller Testing
Julie Spiering—DSGW
Latvala Lumber Co.
Leagal Aid of NEMN
Lightening Electric
Local 633 Cement
Masons
Lowe's
Mesabi Daily News
Messabi Community &
Technical College
More Talent Than Cents
Northeast Technical
Services
Northern Lights
Surveying
Northern State Bank -
Virginia
Outward Bound
Perrella & Associates
Pizza Hut
Plumbing & Heating
Direct
Pohaki Lumber
Range Association of
Realtors
Range Office Supply
Range Paint
Range Rent All
Rapid Rental & Supply
RSC Rental
Ridge Inn Mini Storage
Security State Bank -
Hibbing
Sentenced to Serve
Service Solutions
Sim Supply
St. Louis County
Thrivent Financial for
Lutherans
US Bank
United Methodist—
Virginia
Ulland Brothers Inc.
United Way of NE
Minnesota
Vermilion Land Office
Vermilion Law Office
W. A. Fisher
Wells Fargo Foundation



Love in Action!
*“My Children,
our love should not
just be
words and talk;
it must be true love,
which shows itself in
action.”*
I John 3:18

**WEBSITE
AND EMAIL**

For the latest news on building projects, volunteer opportunities and events please check our website often at:

www.nslchfh.org

If you would like to receive email updates on volunteer opportunities and events please send us an email with that request to:

habitat@nslchfh.org

*We are revamping our
website!*

*Check out the new
website look and
innovations in mid
September at
www.nslchfh.org*



North St. Louis County

Habitat
for Humanity®

NON-PROFIT
US POSTAGE PAID
PERMIT #105
VIRGINIA, MN 55792

PO Box 24
VIRGINIA, MN 55792
RETURN SERVICE REQUESTED



Building Hope with NORTH ST. LOUIS COUNTY HABITAT FOR HUMANITY

Make your plans to partner
with NSLCHFH this ***Fall!***



- * ***Volunteer*** on a build site individually or ***gather*** family, friends and fellow churchgoers
- * ***Provide*** a meal for volunteers on the build site
- * Volunteer in the office and help ***prepare*** mailings and fold newsletters
- * Volunteer to ***support*** our partner families on the family support or family selection committies

To schedule one of these activities please call **Tom Long** at the Habitat office at 866-749-8910!